

# GeoElections News

May 2009 ♦ Temple Terrace, FL ♦ www.icwmaps.com

VOL. 6 NO. 1 - ★★★ \$50

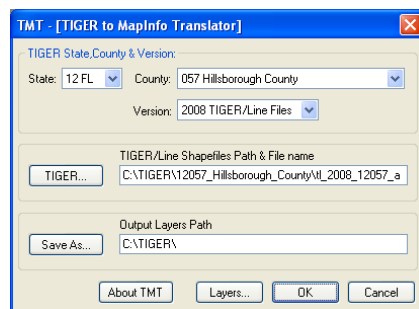
## MapInfo to TIGER Translator© (TMT)

The ICW **TIGER to MapInfo Translator© (TMT)** was first introduced in 1992 and designed to work from a DOS prompt. **TMT©** was originally written in Clipper and MapInfo, Corp. was the first one in line to purchase the product. This is ancient history.

Roll forward to 1998 and ICW introduced **UTT©** written in C++ and MapBasic which facilitated the convenience of speed and an interface that operated from within the MI Pro environment. **UTT©** was backward compatible to the 1995 TIGERs and working forward through the 2006 2<sup>nd</sup> Edition TIGERs.

TIGER/Line Shapefiles introduced in 2008 represent a new generation of data formats that demand a new translator. The people at ICW have responded with a new version with a name that harkens back to the 1990's and a user interface designed to endure the next decade, **TMT©**.

The fastest, easiest and most powerful TIGER/Line File translator we have ever built. The people at ICW are proud to offer you **TMT©**.



## Introducing GeoAuthor® 2.0

ICW introduced **GeoAuthor® 2.0** at the National Council of State Legislatures (NCSL) Spring Forum in Washington D.C. to a welcoming audience. While numerous special interest groups attended the Spring Forum, the Elections and Redistricting group was the primary audience.



**GeoAuthor®** is designed to provide the user with an easy-to-use set of tools with which to create a project for a county using TIGER/Line Shapefiles provided by the US Bureau of the Census. Once the project is created the **GeoAuthor®** user can make edits to the geometry and tabular attributes of the map data, such as TIGER to alignment to parcel maps, aerial photos, town boundaries; add missing features like streets, water, landmarks, etc.; correct names, address ranges, ZIP Codes, etc. and use the diagnostic routines in **GeoAuthor®** to confirm the integrity of the data. **GeoAuthor®** includes **GeoPoints©** for creating and maintaining geographic databases of points and tabular attributes.

**GeoAuthor®** runs in the MapInfo Professional environment and is the only commercially available full featured editing product for designed to make topologically correct edits to TIGER/Line Shapefiles. **GeoAuthor®** is the next generation of editing from ICW following **TIGERUS©** which was first introduced in 1995.

“Census products have always been extremely valuable to a diverse audience private and public sector decision makers. Since 1995 ICW has delivered an easy-to-use and well structured means to economically update and enhance TIGER\Line geography making it suitable for expanded use in decision support systems,” said Ken Tozier CEO of ICW. “One can have over 40 layers of enhanced geographic data produced by **GeoAuthor®**.”

**ICW, where imagination and geography converge.**



With the merger of MapInfo and Group 1 software into a single division of Pitney Bowes, Inc., Tuesday, January 27, 2009, the new name officially becomes Pitney Bowes Business Insight (PBBI) which is dedicated to supporting a **Partner Program** to bring the best in class of vertical integration of PBBI applications to address your most important business issues inclusive of both the private and public sectors.

As valued clients, you can be assured that PBBI is dedicated to delivering the same quality solutions and expert advice you have come to expect from MapInfo, Group 1 Software and their channel partners who offer a wealth of vertical solutions such as International Computer Works, Inc. (ICW) with their integrated solution for elections, **GeoElections®**. The combination of MapInfo's award-winning location intelligence and predictive analytic solutions and Group 1's renowned operational intelligence and communication management solutions provides even more ways to benefit from the rich set of diverse solutions that comprise the product lines of both PBBI and ICW:

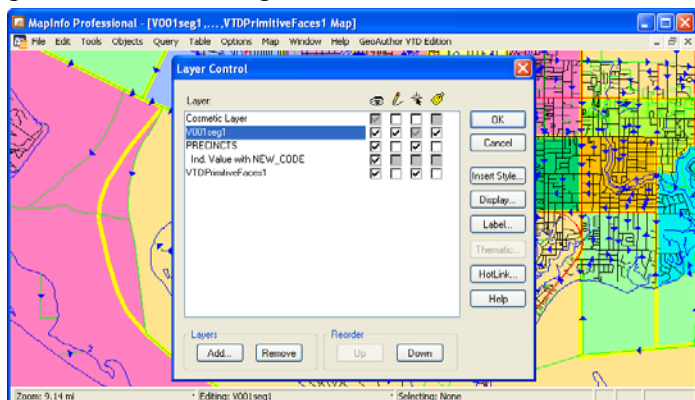


- Industry-leading geospatial tools for analyzing opportunities and determining risks.
- New ways to manage and intelligently use data to drive operational effectiveness through a better understanding of both your customers and your business.
- Exciting capabilities to deliver clear, consistent, personalized (print and digital) communications to your customers regardless of geography or language, via any channel.
- A network of partners through whom we better serve you, the end-user meet your business goals and objectives because of the consultative services of PBBI's business partners and the vertical integration of PBBI products with proprietary applications developed by PBBI partners.

Your relationship is important to us. As Pitney Bowes Business Insight, we're ready to help you implement solutions you meet your needs, connect with your customers whether they are in the private or public sectors.

### GeoAuthor VTD Update Assists In Florida

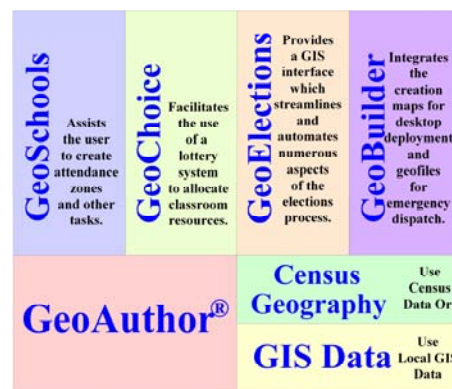
ICW introduced **GeoAuthor VTD Edition** at the 7<sup>th</sup> Annual GeoElections Conference in November 2008. Designed to assist clients with participation in the VTD Update Phase for Redistricting 2010, this also gave our clients an opportunity to preview the next generation of editing tools from ICW.



**Congratulations Florida !**

### GeoAuthor®

Opens the wide ranging set of possibilities to integrate a host of application modules while leveraging the most current data products available from



both federal and local sources to build the geographic decision model for your organization through tools to build better geography. Aligned to work in a diverse set of environments, **GeoAuthor®** will deliver powerful editing with intuitive functions and rules based analysis to detect and identify data errors in order to maximize the integrity of the data upon which processes and critical decisions are based.

**ICW, where imagination and geography converge.**