

GeoElections News

November 2016 ♦ Temple Terrace, FL ♦ www.icwmaps.com

VOL. 13 NO. 4 - ★★★ \$.50

Getting Ready To Host The Friday GeoElections® Workshop

This year marks the first GeoElections workshop following a conference in the soon to be 15 year history of hosting an annual user conference.

Reservations for attendance received thus far indicate this will be a meaningful experience for participants. At this time hotel rooms at the Embassy Suites for Thursday evening, Dec 1 are no longer available at the conference rate.

Some alternative hotels in the area include:

La Quinta Inn & Suites
(813) 910-750

Wingate By Wyndham
(813) 979-2828

If you have made reservations to attend the workshop make sure you have your project on a notebook or desktop unit.

We will have monitors available for anyone with a desktop unit. A projector, WI-FI and printer will also be available.

Hours are 9:00 AM to 3:00 PM and ICW will provide beverages, snacks and lunch.



Looking forward to working with you at our GeoElections Workshop Friday, Dec 2, 2016.

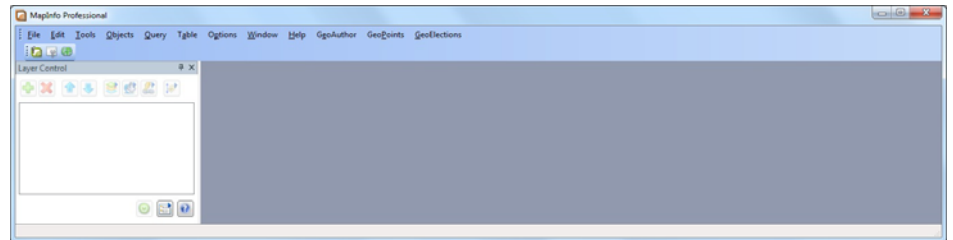
Congratulations To Our Elections Professionals!

Yes, to our elections officials and all staff members for conducting a professional and successful Presidential election. With all of the work and final reporting, certifications, etc. winding down we have just 16 more days before commencement of our 15th Annual GeoElections User's Conference. As of Veterans' Day, Friday 11-11-2016, there were 6 rooms available in our GeoElections block at the Embassy.

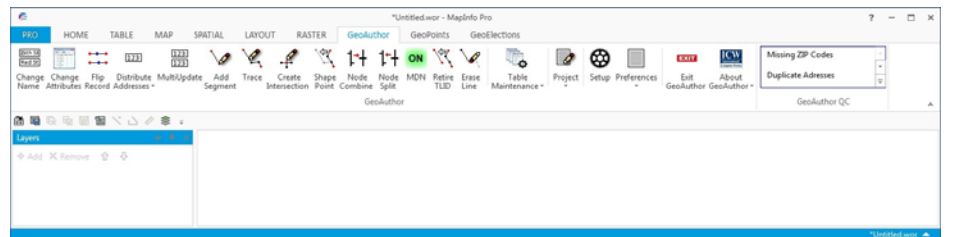
Updates and New Directions

Looking ahead, the 32 bit version of MI Pro will be in use and supported for years; however, at some point we expect an orderly transition to the 64 bit version. To that end GeoElections will be ready for use by our clients.

The greatest difference between the two versions of MI Pro can be observed with the pull down menu interface in the 32 bit version compared to the tabs, ribbons and function groups with icons in the 64 bit version.



32 bit Version



64 bit Version

The people at ICW have already initiated the recoding of our applications to facilitate their proper execution in the 64 bit version of MI Pro. Tabs, ribbons, groups, icons and more will be demonstrated at the GeoElections User's Conference. Input from all attendees will be appreciated.

We will also discuss alternative strategies for making an orderly transition from the 32 to 64 bit Version. Owning a license for one version entitles you to a license for the second version at no additional cost. One can run both versions on the same machine simultaneously and the data created with GeoAuthor, GeoPoints and GeoElections will work in both versions.

We are looking forward to an informative conference replete with a robust dialog with all attendees. Make your travel arrangements and reservations now. Enjoy safe travels.

ICW, where imagination and geography converge.